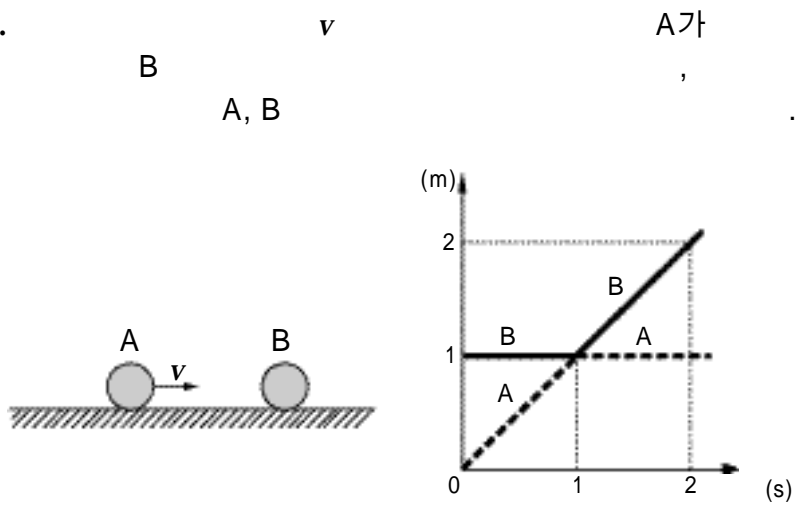


69.

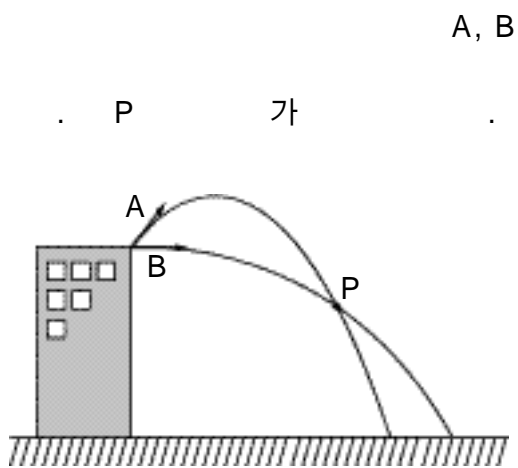


(,)

A
 A B

L C \neg , L \neg , C L, C

70.



(,)

A
 P A B

L \neg , L \neg , C L, C \neg , L, C

71.

(1) (,)

(2) 가 1

	A	B	C
	5 C	5 C	5 C
1	42 C	28 C	22 C

(,)

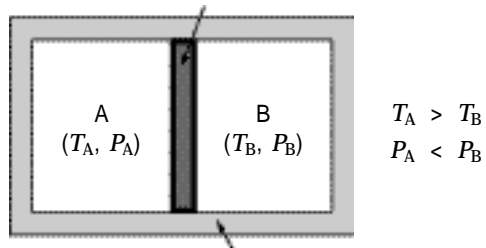
?

A
 A C

\neg L C \neg , C L, C

72.

가 A B, A P_A B



(,)

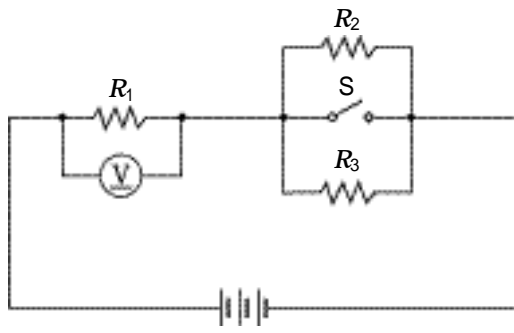
가

A

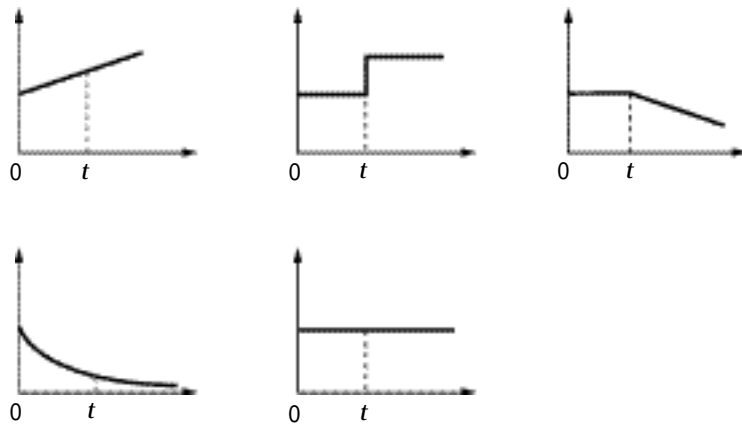
가

73.

S t



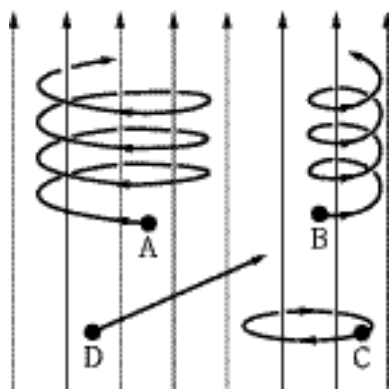
가 가
? (, R_1, R_2, R_3)



74.

D

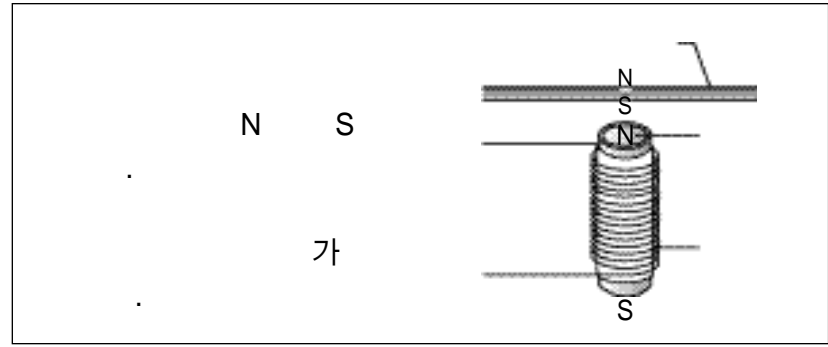
A, B, C,



? [2]

A, B
 C
 D

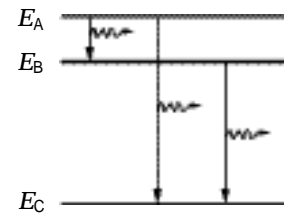
75.



? [1]

76.

가 , E_A, E_B, E_C



가 ?

